

GABRIOLA PARK

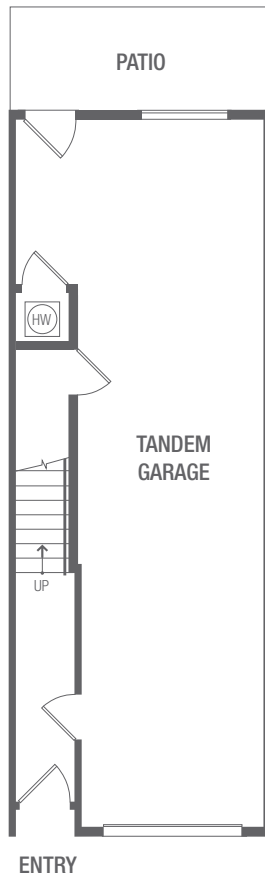
NATURAL LIVING ON YORKSON PARK



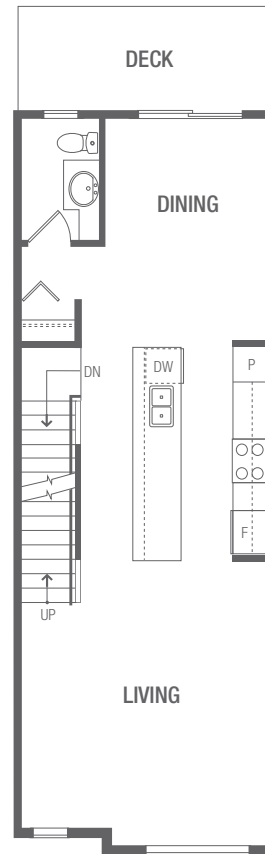
PLAN A

1408 Sq. Ft. / 3 BED / 2.5 BATH

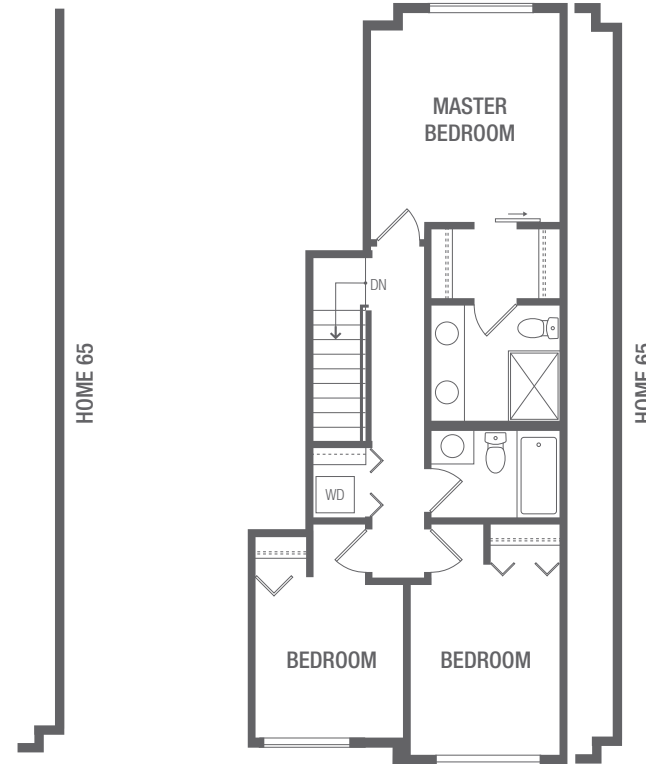
Gorgeous open concept with large centre galley kitchen, perfect for homework and entertaining!



LOWER



MAIN



UPPER

In our continuing effort to improve and maintain the high standard of the Gabriola Park development, the developer reserves the right to modify or change plans, specifications and features without notice. All dimensions and areas are approximate and are based on Architectural measurements. As reverse and/or mirrored plans occur throughout the development phases please see latest set of architectural plans for current layout if material to your decision to purchase. Illustrations and renderings are an artist's conception and are intended as a general reference only. Please see disclosure statement for specific offering details. E. & O.E.

GABRIOLA PARK

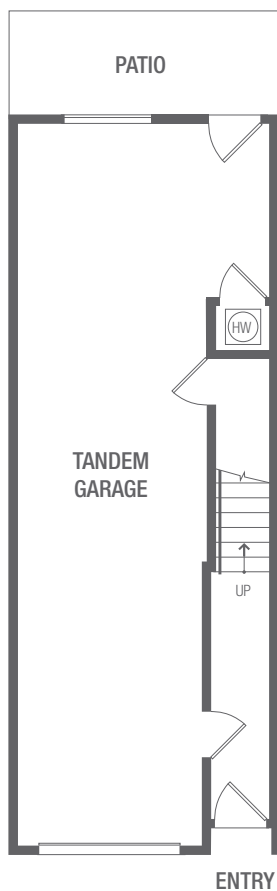
NATURAL LIVING ON YORKSON PARK



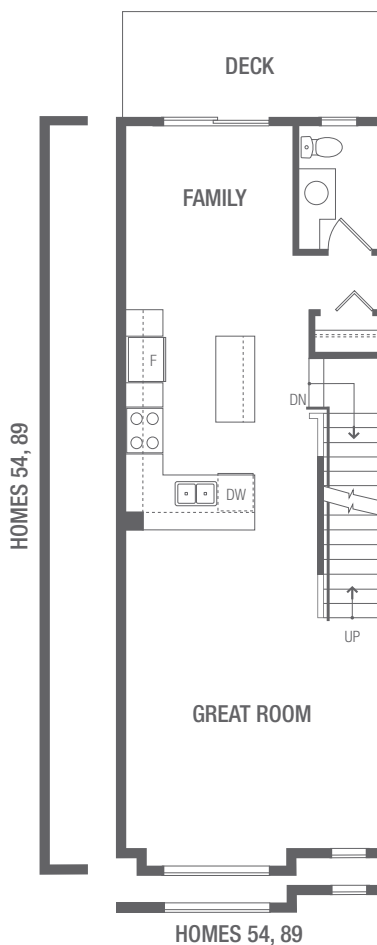
PLAN B

1414 Sq. Ft. / 3 BED / 2.5 BATH

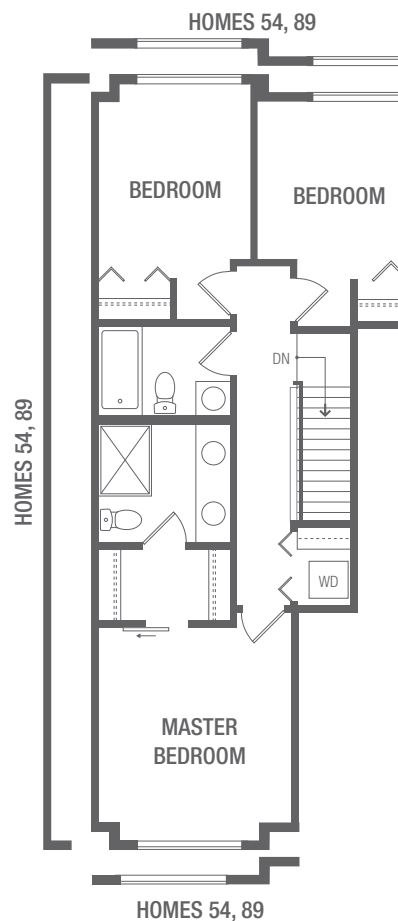
Gorgeous open concept with centre island kitchen perfect for preparing family meals and entertaining!



LOWER



MAIN



UPPER

In our continuing effort to improve and maintain the high standard of the Gabriola Park development, the developer reserves the right to modify or change plans, specifications and features without notice. All dimensions and areas are approximate and are based on Architectural measurements. As reverse and/or mirrored plans occur throughout the development phases please see latest set of architectural plans for current layout if material to your decision to purchase. Illustrations and renderings are an artist's conception and are intended as a general reference only. Please see disclosure statement for specific offering details. E. & O.E.

GABRIOLA PARK

NATURAL LIVING ON YORKSON PARK

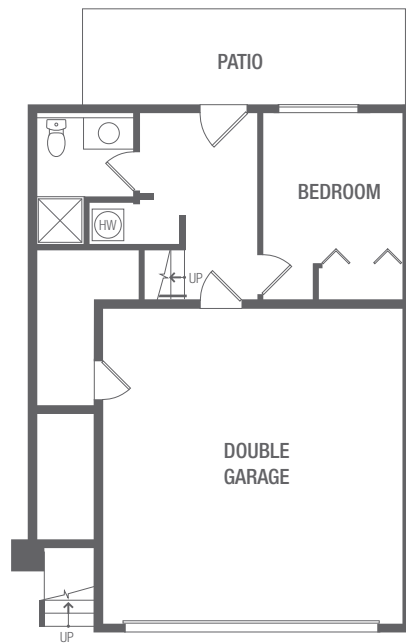


PLAN D

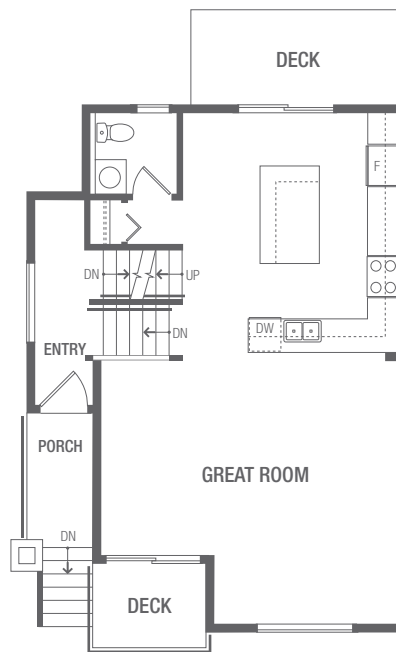
1751-1794 Sq. Ft. / 4 BED / 3.5 BATH

Luxurious open concept with gorgeous island a kitchen open to spacious great room for living and dining. Enjoy the outdoors with 2 decks and a patio.

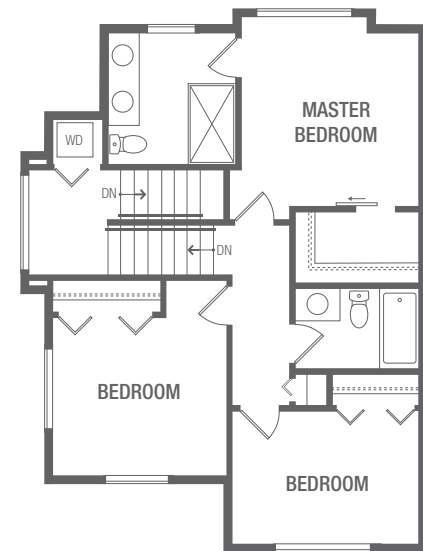
Slightly smaller basement area in units 32,44, 67, 106, 118, 124, 136 & 147. Please see architectural plans if material to your purchasing decision.



LOWER



MAIN



UPPER

In our continuing effort to improve and maintain the high standard of the Gabriola Park development, the developer reserves the right to modify or change plans, specifications and features without notice. All dimensions and areas are approximate and are based on Architectural measurements. As reverse and/or mirrored plans occur throughout the development phases please see latest set of architectural plans for current layout if material to your decision to purchase. Illustrations and renderings are an artist's conception and are intended as a general reference only. Please see disclosure statement for specific offering details. E. & O.E.

GABRIOLA PARK

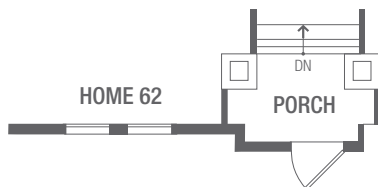
NATURAL LIVING ON YORKSON PARK



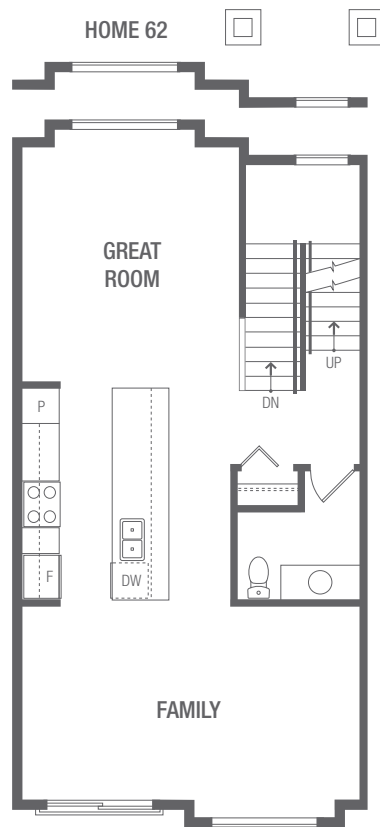
PLAN E

1870-1871 Sq. Ft. / 4 BED / 3.5 BATH

Gorgeous open concept with luxurious centre galley kitchen, perfect for homework and entertaining!



LOWER



MAIN



UPPER

In our continuing effort to improve and maintain the high standard of the Gabriola Park development, the developer reserves the right to modify or change plans, specifications and features without notice. All dimensions and areas are approximate and are based on Architectural measurements. As reverse and/or mirrored plans occur throughout the development phases please see latest set of architectural plans for current layout if material to your decision to purchase. Illustrations and renderings are an artist's conception and are intended as a general reference only. Please see disclosure statement for specific offering details. E. & O.E.